



524F/534F/554-x Series 150MHz Modulator Driver



3424

The 5x4F series dual modulation drivers are compatible with Isomet 150MHz AO modulators and frequency shifters. These RF drivers include a precision crystal oscillator, wideband mixer, high speed RF switch and power amplifier stage. Separate modulation inputs enable simultaneous analog (proportional) and digital (On:Off) amplitude control. Drivers can be factory configured for either or both modulation input controls (see options).

Active modulation	Model	Modulation Input
Digital	524F-	5V logic compatible
Analog	534F-	0 - 1V *, 50ohm
Dual	554F-	both, as above

Efficient heat transfer from the driver is required. The mounting surface must be attached to an external heat sink. The supply to the 5x4F-2 driver is internally regulated and thus will accept a wide DC power input range. The DC input is not internally regulated on versions 5x4F-L, F-4, F-7.

SPECIFICATIONS

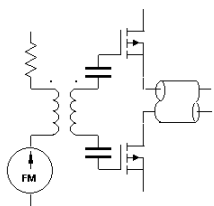
Output impedance:	50Ω Nominal
Load Mismatch VSWR:	2:1 Max
<u>Analogue Input:</u>	0 - 1V * for 100% depth of modulation
RF output analog mod'n On-Off Ratio:	>40dB
<u>Digital Input:</u>	> 2.7V = ON, < 0.8V = OFF
RF output digital mod'n On-Off Ratio:	>50dB
Frequency Accuracy:	± 25ppm
Frequency Stability:	± 25ppm
DC Power Input: 5x4F-L	+15Vdc regulated to ± 1%, < 400mA
5x4F-2	+22 to +30Vdc regulated to ± 1%, < 500mA
5x4F-4	+24/+28Vdc regulated to ± 1%, < 500mA
5x4F-7	+24/+28Vdc regulated to ± 1%, < 800mA
Temperature Range:	0°C to 60°C ambient, temperature at mounting face must not exceed 60°C.

PERFORMANCE

Model	Centre Frequency	Minimum Rise Time	RF Drive Power	Supply
5x4F-L	150MHz	6nsec	>1.5W	+15V
5x4F-2	150MHz	6nsec	>2.2W	+22 to +30V
5x4F-4	150MHz	6nsec	>4.0W >3.5W	+28V +24V
5x4F-7	150MHz	6nsec	>6.0W >5.0W	+28V +24V

ALL SPECIFICATIONS SUBJECT TO CHANGE WITHOUT NOTICE
 ISOMET CORP, 10342 Battlevue Parkway, Manassas, VA 20109, USA.
 Tel: (703) 321 8301 Fax: (703) 321 8546
 E-mail: ISOMET@ISOMET.COM Web Page: WWW.ISOMET.COM

Quality Assured.
 In-house: RF & Digital design
 Software Development
 OEM manufacture



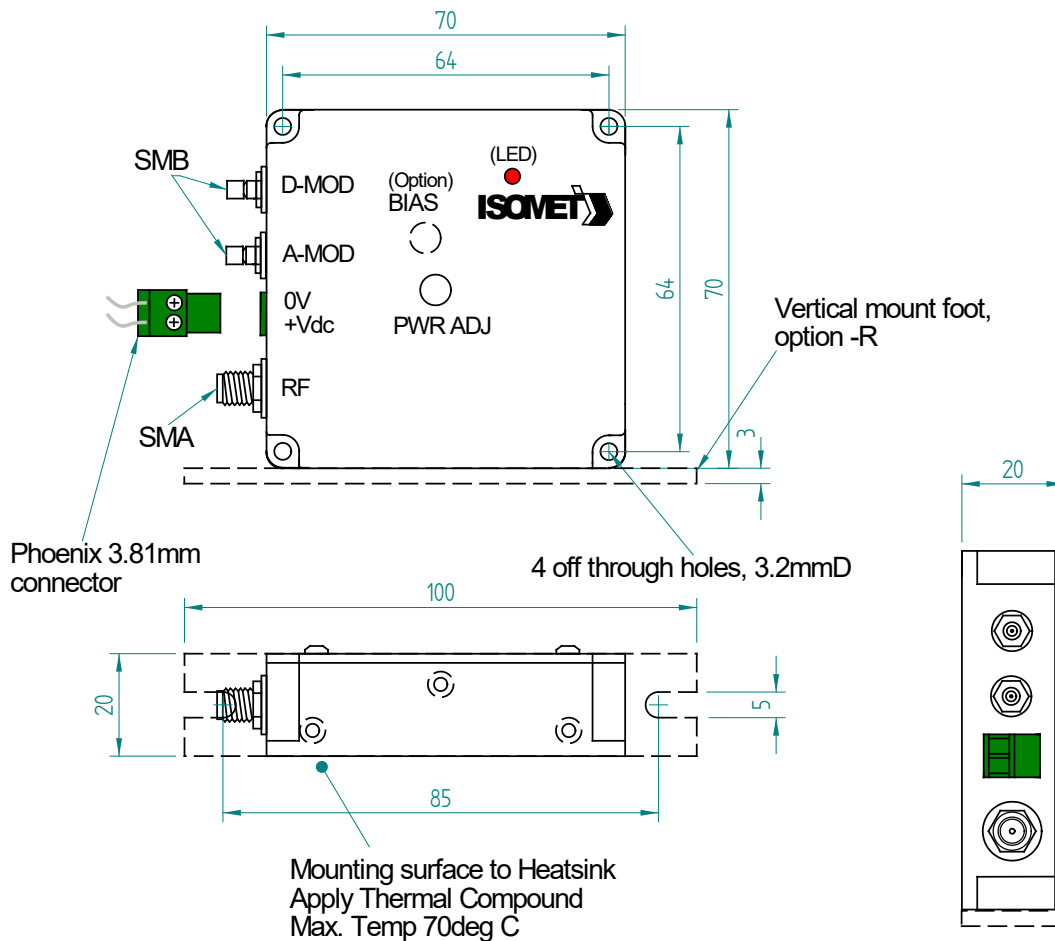
524F/534F/554-x Series 150MHz Modulator Driver



3424

OUTLINE DRAWING

Dim'n: mm



Options:

Add suffix'es (-x)

Modulation BIAS adj pot
Heatsink with fan
Vertical mount foot
0-5V analog modulation
0-10V analog modulation

'-B '
'-F '
'-R '
'-V '
'-X '

ALL SPECIFICATIONS SUBJECT TO CHANGE WITHOUT NOTICE
ISOMET CORP, 10342 Battlevue Parkway, Manassas, VA 20109, USA.
Tel: (703) 321 8301 Fax: (703) 321 8546
E-mail: ISOMET@ISOMET.COM Web Page: WWW.ISOMET.COM

Quality Assured.
In-house: RF & Digital design
Software Development
OEM manufacture